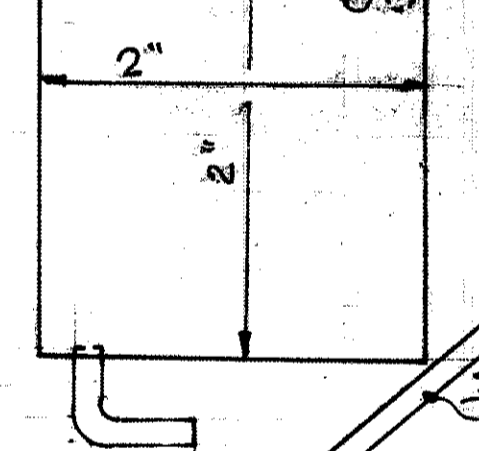
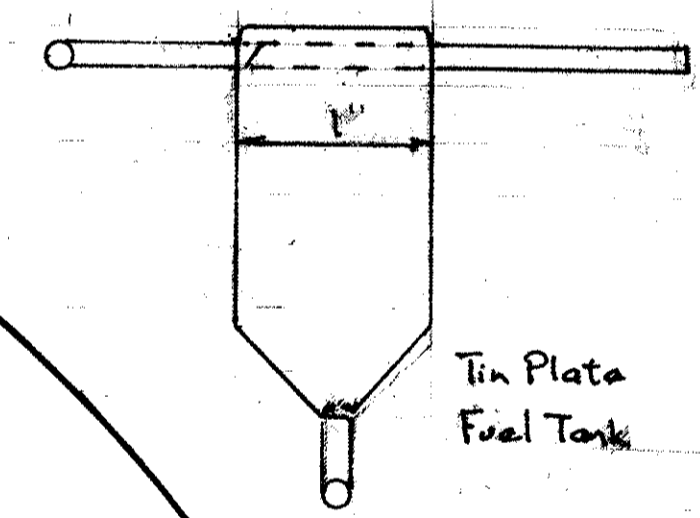
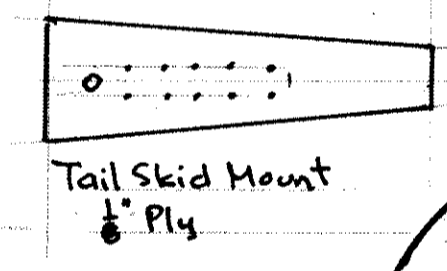
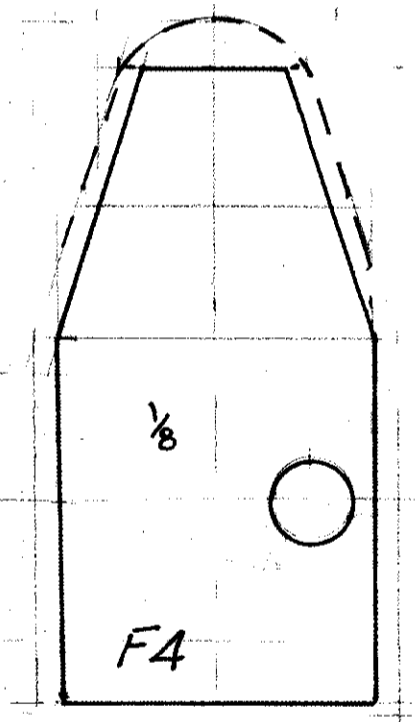
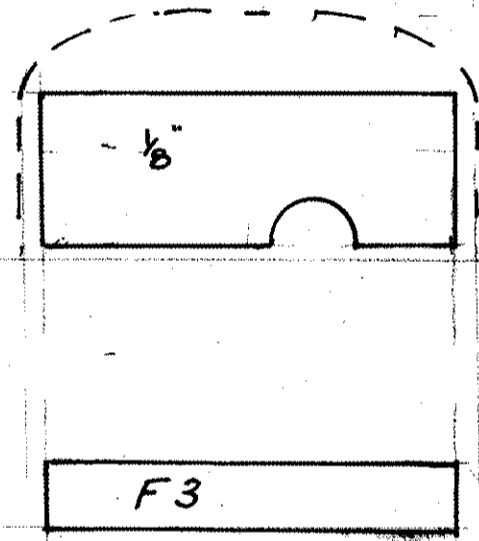
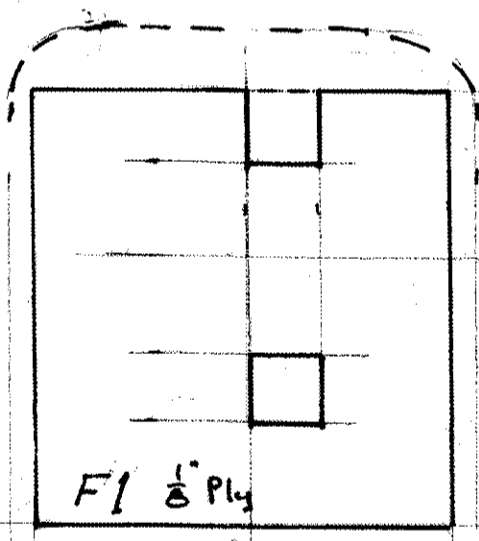
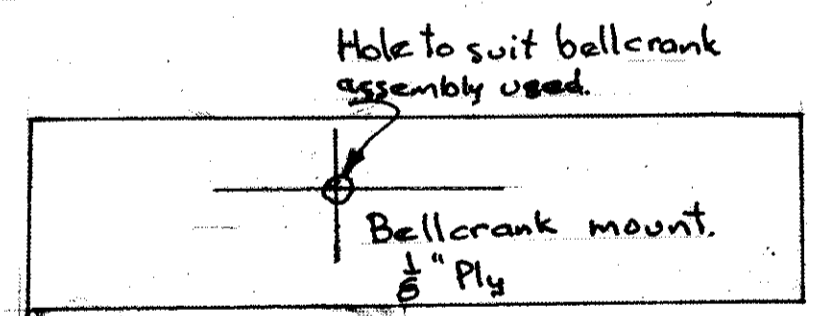
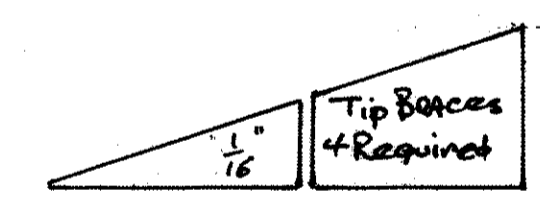
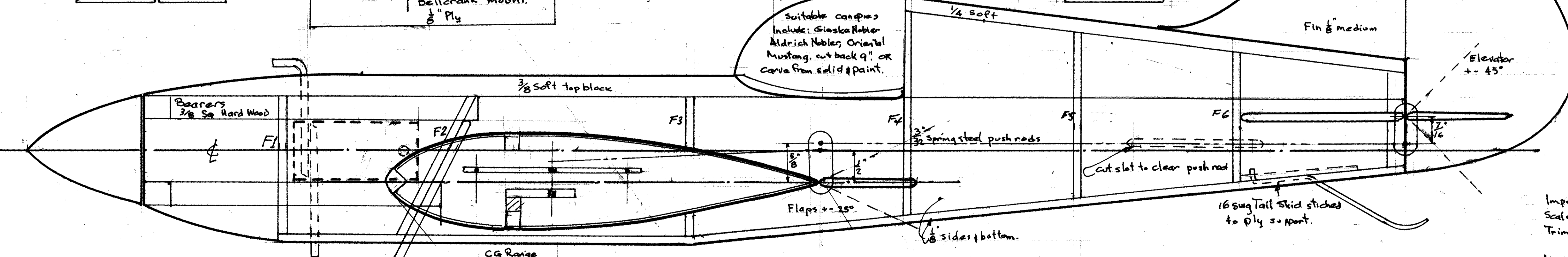


Rib R1 $\frac{1}{8}$ " Sheet
 Rib R1A $\frac{1}{8}$ " Sheet no leadout holes
 Ribs R2 $\frac{1}{2}$ " Sheet q Required
 Ribs R3: Leadout holes not required, q Req'd.

Tip Rib 4 Required. $\frac{1}{2}$ "



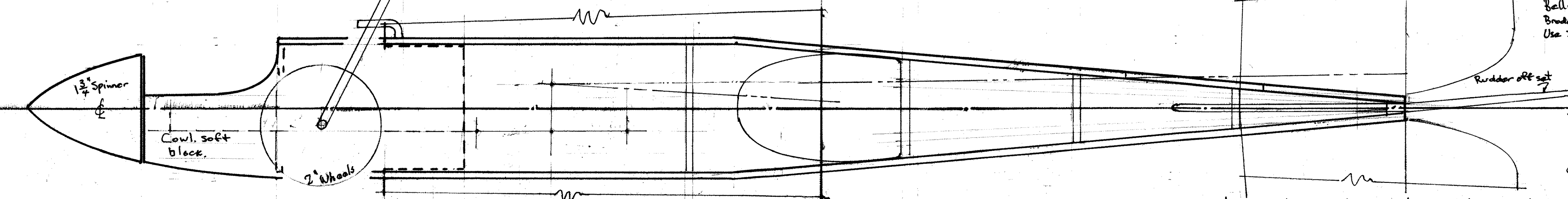
10 SUG ($\frac{1}{8}$)
Spring steel



Suitable canopies include: Glasika Nubler, Aldrich Nubler, Oriental Mustang, cut back 9" or carve from solid & paint.

Holes to stitch gear onto F2.

Imperial measurements used as per original. Scale from plan measurements not given. Trim LE and sheeting to clear fuselage neatly between R1 and R1A. Modify commercial fuel tank or make your own. Leadouts, silky nylon covered fishing trace. Bellcrank Sullivan or similar suggested. Break horns suggested. Use 2 bends on push rods at flap horn.



PRETTY PERFECT

Designed by Arthur Percival 1977
 Original Engine PAW 2.5cc diesel
 Span 41" Weight 26 oz approx